

**SUNDAY, JULY 5, 2026**

**SILVERDALE LUTHERAN CHURCH**

**LOST & FOUND**



Visit the Lost & Found in Fellowship Hall! Any items not picked up by July 5<sup>th</sup> will be donated.



**July 6<sup>th</sup> is the LAST day to register for VBS!!!**

SILVERDALE LUTHERAN  
**VBS**  
2026  
July 27<sup>th</sup>-30<sup>th</sup>



**DYNAMIC DUOS**  
of the Bible

**REGISTER TODAY!**  
incoming pre-k to incoming 5<sup>th</sup> grade



*It's time for VBS!!! Join us for the best week ever of creating, serving, playing, singing and celebrating Bible stories! We meet from 9am-noon each day in the Gathering Place at SLC. We are proud to offer this FREE camp to our community each year. Space is limited so claim it now and invite your friends!*

**Help us out!**

••• VOLUNTEER @ VBS  
**July 28-31<sup>st</sup>**

**DYNAMIC DUOS**  
of the Bible



**SIGN UP**

<https://forms.gle/nfJHGFmtVS9XgVuI6>

**Questions?**

JVOIGT@SILVERDALELUTHERAN.ORG



*Young Adults @*  
**CAMP LUTHERHAVEN**

Thursday, July 9<sup>th</sup>

*\*starting at 5pm\**

*BBQ, Boats, Campfire*

Contact PJ for more info

jsansgaard@gmail.com or 360-621-1437



# YOUTH *LAKE* night

Wednesdays  
July 15<sup>th</sup> & 29<sup>th</sup>

6:00-8:30pm

SLC hosts July 15th!

swim • paddle • play

pack your own picnic • shared devotions & treats  
*lifeguard on duty*

## Financial Update

Although at the end of May we got close to making up the deficit we had in the first 4 months of the year, June giving has been very low and we are likely to fall back significantly in meeting our ministry expenses.



Because of vacations and other factors, we won't have the financial information from June until mid-July, so we wanted to get you news now of this anticipated shortfall in June. Our weekly offerings in June were around 13K but we need at least 18K weekly to meet our ministry commitments. We pray we will all do what we can to address this shortfall.



3204 NW Randall Way Silverdale

*Ladies' Night*

July 14th

5:30pm

*Out*



# Annual SLC picnic

**Date:** Sunday, July 26

**Time:** After late service, 12:30pm-4pm. Lunch begins at 1pm.

(Feel free to stay later, but we'll be closing down the burgers and hot dog meal portion by 2:30pm.)

**Location:** Olympic Lutherhaven  
(park side - 9375 NW Holly Road, Bremerton, WA 98312)

Be ready to eat, play some games, hang out, swim, kayak, or canoe to your heart's content.

(Pending confirmation of lifeguard. Otherwise, anyone under the age of 18 must be under direct parent supervision.)

We'll supply all the fixings for burgers and hot dogs. Please bring a side or dessert to share based on the first letter of your last name below.

**A-L Side Dish | M-Z Dessert**

Do you have dietary food restrictions? If yes, please email us so we can try to accommodate them as best we can. And be sure that any side or dessert you bring, you can also eat.

**Questions or dietary food restrictions?** Please email [slc.annual.picnic@gmail.com](mailto:slc.annual.picnic@gmail.com)

## SLC Men's Retreat 2026

SAINT ANDREW'S HOUSE, UNION, WA

August 28-30

[bit.ly/SLC2026MensRetreat](https://bit.ly/SLC2026MensRetreat)

**REGISTER NOW**



Hey guys! Sign ups are going well for our August 28<sup>th</sup>-30<sup>th</sup> Men's Retreat! Although there are no single rooms left, we hope this won't keep you from signing up! Use a CPAP machine? No problem, we'll put you with someone else who uses one. Not signing up because you are a bit uncomfortable with small group discussion or Bible study? No problem, PB will structure our time to not put anyone on the spot. Our focus this year is on Leadership.

We will hear excerpts from experts in that field and we'll look at leadership in the home and family, in our work and community, and in our church. Don't consider yourself a leader? No problem, we will celebrate all kinds of leadership styles. Come and find out your style and be empowered to be a faithful leader in all your areas of influence! Don't forget, there is lots of free time on Saturday so you'll have time to relax and recharge!

We are so excited to be celebrating 70 years of Olympic Lutherhaven. We are also thrilled to share our updated amazing logo! Thank you, Wade Russell for donating your amazing talents.



Many of you have asked if we had more hoodies and the answer is "yes" and now with our new logo! And for the first time we have baseball hats! Please visit the following links to order yours. Not only will you look amazing, but this is also a great fundraiser for camp.



**Ballcap \$29**



<https://www.customink.com/fundraising/olympic-lutherhaven-merch-fundraiser-4045>



**Hoodie \$49**

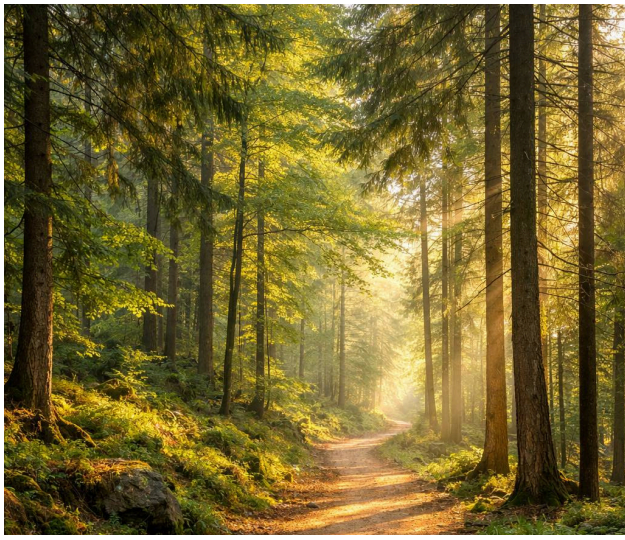


<https://www.customink.com/fundraising/olympic-lutherhaven-merch-fundraiser>

**We are hoping to sell 50 items to meet our fundraising goal.  
Thank you for all your amazing support!**

Altar Care has made new altar cloths.

Today is the first day of our new sets. They were done using the memorial funds from Lavonne Greaves, Linda Burt, Les Peterson, and Dick Wales. The four sets will replace those we have been using for a number of years. Some of our older sets will be saved for use at retreats and Lutherhaven. Thanks to Karen Planck for her work as a seamstress on this project and to Karen Arper for transport of materials and people to complete the project.



# NEW BLOG!

Check out PB's newest blog "Recovering Our Evangelical Zeal" on our website!

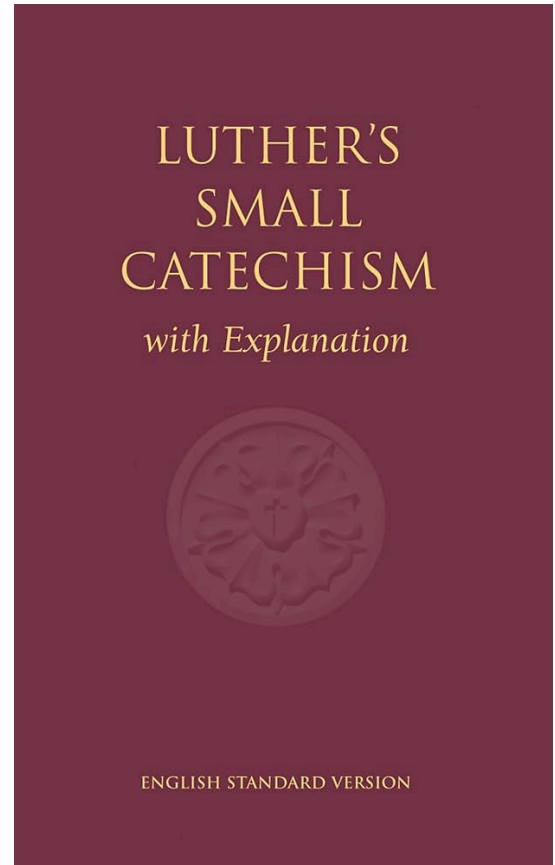


## PASTOR BILL'S FALL CLASS TEASER

### Back to Confirmation: A Deep Dive into the Basics

Ever wish you could do "Confirmation" over again? Or maybe you didn't grow up Lutheran and feel like you missed out on the fundamentals? You are not alone! PB has heard your requests, and this fall, he is taking us back to school--in the best way possible. Our Fall Sunday morning class will feature a deep dive into Luther's Small Catechism. Whether you want a refresher or are learning it for the very first time, this class is for you.

Why the Catechism? When Martin Luther toured Germany, he realized many Christians knew very little about the Bible or core faith doctrines. He wrote the Small Catechism as a simple, powerful tool to change that. If last year's classes felt a bit too heavy, don't worry!



This year, we are focusing on the core essentials. No confusing theological jargon--just clear, practical teaching that builds your confidence and enriches your daily faith life.

When: Sunday Mornings (Fall 2026)

What: Fun, accesible look at the Bible and Lutheran basics

Who: Absolutely everyone--lifelong Lutherans and newcomers alike

Let's master the basics together. See you there!

# Let's Lift Up Emalee as She Represents Our Community at Miss Washington

We are grateful to have Emalee serving as our **administrative assistant at SLC**, where she brings the same warmth and dedication we see in her community work.

If you have met Emalee, her genuine smile, joyful spirit, and enormous heart for serving others cannot go unnoticed. She has a remarkable gift for making people feel seen, valued, and important. Her enthusiasm for life is contagious, and her kindness leaves a lasting impression on everyone she meets.



credit P5 Photography

Emalee first graced the Miss West Sound stage in 2023 as a somewhat timid Teen candidate. Encouraged by a friend and softball teammate, she made a last-minute decision to give it a try. Little did she know that the journey she was about to embark on would be filled with personal growth, confidence, and a resilience she never knew she possessed.



The “pageant bug” quickly bit Emalee, and she continued competing in Miss America local preliminaries, growing and evolving with each experience. She added choreography to her speed-painting talent and began to shine with a confidence and personality that captivated both her family and audiences alike.

In October, Emalee earned the title of Miss West Sound 2026 and the opportunity to compete for the title of Miss Washington. Along the way, she has shared her artistic gifts throughout our community - painting business windows in downtown Poulsbo, creating engaging content on social media, showcasing her talents at Viking Fest and even participating in our SLC Christmas Variety Show!

Emalee’s heart for service began in sixth grade when she joined the Poulsbo Middle School Leo Club—a moment that sparked nearly a decade of volunteer leadership. Through Leo Club and now as a Leo-to-Lion with the Poulsbo Noon Lions and District 19N, she has learned to lead with empathy, connect through her artistic gifts, and champion youth and intergenerational service. The Lions community has become her second family, cheering her on in every season—including her crowning as Miss West Sound 2026. For Emalee, service isn’t just something she does; it’s who she is.

Over the past three years, Emalee has earned more than \$6,000 in scholarships, which she has used to help fund her Bachelor of Arts degree at Western Washington University. Next year, she will complete her Master of Education degree. Her goal is to become an educator, and the impact she will have on the lives of her future students is immeasurable. *There is no doubt that our world will be better because of the investment she is making in the next generation.*



## **EMALEE BURGH** **Miss West Sound 2026**

Sponsored by Poulsbo Noon Lions

### **Community Service Initiative:**

PAINTING THE GARDEN OF YOUR MIND:  
OVERCOMING ANXIETY THROUGH ART

**Talent:** SPEED PAINTING

### **Favorite Quote:**

“KEEP SOME ROOM IN YOUR HEART FOR THE UNIMAGINABLE.” - MARY OLIVER

***Please keep Emalee in your prayers as she prepares for the Miss Washington competition, July 5-11. No matter the outcome, she has already made us proud.***

### **Find Emalee on social media:**

instagram @misswestsoundwa

facebook @MissWestSound

Photo from: <https://misswestsound.org/>

# WEEK OF JULY 5TH-11TH

Brian Duarte

July 8

Cheyenne Cowgill

July 9



Don Lachata

July 10

Karen Sansgaard

July 10

Athena Fogle

July 11

Jesus & Cassy Cantu

July 5<sup>th</sup> (40 years)

David & Marybeth Fergus

July 11<sup>th</sup> (45 years)

George & Sandra Evanoff

July 6<sup>th</sup> (19 years)



Greg & Martha Patterson

July 11<sup>th</sup> (34 years)



LUTHERAN  
WORLD RELIEF

## Earthquake Relief



# VENEZUELA EARTHQUAKES:

You can rush help to neighbors.



YOUR DONATION IS SECURE

There are two ways you can help those suffering in Venezuela after the devastating earthquakes. You can give directly to Lutheran World Relief or can give to SLC via check (please mark in the memo line and/or on the envelope "For Venezuela Earthquake"). In a few weeks, we will send one check to LWR. LWR is a very trusted vehicle for getting financial help where it is needed.

### Worship Attendance June 28<sup>th</sup>

Early Service	Late Service	In Person Total (includes camp)	Online Total	Grand Total
138	135	313	73	386

# SLC Calendar | Week of July 5th

## Sunday, July 5th

- 8:30a Early Worship (S)  
No Summer Brunch  
10:30a Late Worship (S)



**First  
Sunday  
of the  
Month!**

## Monday, July 6th

### *Sewing Camp*

- 9:00a Ties That Bind (Quilters) (FH)  
2:00p Bible Study (St)

## Tuesday, July 7th

### *Sewing Camp*

- 10:30a Alzheimer's Support (St)  
12:00p Al Anon (27)  
1:00p Text Study (4)  
7:00p Hometown Band (FH)

## Wednesday, July 8th

### *Sewing Camp*

- 10:30a Manna Bible Study (4)  
12:00p Hearty Meals (FH)  
1:00p SLiCk Pickers (S)  
3:30p GS Troop 41332 (23)  
6:15p Al Anon (27)  
6:30p Wed. Lake Nights (Wildcat Lake)

## Thursday, July 9th

### *Sewing Camp*

- 10:30a Thursday Bible Study (FH)  
12:00p Song of the Church (S)  
1:00p Faith & Fellowship for Older Men (St)  
1:00p Our'Chestra (S)  
5:00p Young Adults (OLH)  
6:00p Orca Roundtable (GP)  
6:45p Bell Ensemble (4)  
7:00p GS Wildside Camp (FH)  
7:00p Venture Scouting Group (23)

## Friday, July 10th

### *Sewing Camp*

- 8:00a Men's Prayer Breakfast (Bowling Alley)

## Saturday, July 11th

- 10:00a League of Women Voters (4, GP)

## Sunday, July 12th

- 8:30a Early Worship (S)  
9:15a Summer Brunch - Ties that Bind &  
Garden Gurus (FH)  
10:30a Late Worship (S)



## **NEW ADA DOORS INSTALLED**

**New ADA doors have been installed between the Narthex and Fellowship Hall!  
Please use the buttons next to the doors to open them rather than trying to open the doors manually. This project was funded by a special donation of a SLC household and the SLC Building Fund.**

## **OFFICE HOURS - WEEK OF JULY 5-11**

9:00am-12:00pm Monday & Tuesday (Volunteer Only)

Wednesday Office Manager returns & hours return to normal

**We appreciate your understanding & cooperation during the summer!**

*There will be no Beacon published on July 12<sup>th</sup>. Office Staff are on vacation!*