

SUNDAY, APRIL 19, 2026

SILVERDALE LUTHERAN CHURCH

SUNDAY ADULT EDUCATION CLASS APRIL 19TH



One more week on the Bondage of Will!

We will finish up with some specific questions: What about giving one's life to Christ? What about prayer, sanctification, and discipleship? Come and work with "where the rubber meets the road" when it comes to our question of the will. For the rest of our classes before summer, we will have Bible studies on Moses and David.

<https://bit.ly/SLCAdtEd>



Lutherhaven Fundraiser

Sunday, April 19th

McCloud's Grill House

4111 Wheaton Way, Bremerton

5pm-7pm (come at 4:30 to secure a place!)

50% of proceeds go to Lutherhaven

Spring Cleaning Work Parties @ Lutherhaven!

Check out dates and more information on the [flyer!](#)



As geo-political realities continue to be in constant flux and Israel is often front and center in the news, lets step back and ask how we should view modern Israel. Is modern Israel the same or of the same stripe as Biblical Israel? These and other questions will be worked with as we gather for our monthly fellowship.

God's Work. Our Hands. Servant Event

Sunday, May 17th | 9:45am | Gathering Place

Mark your calendars now to give one hour to make a difference!

Your helping hands will benefit: Silver Ridge Reading Buddies Students | 24 Military Families | Life Pax | SLC Preschool Students | Hawk Elementary Battle of the Books | Birkenfeld Stella Maris Shelter Children | Lutheran World Relief Quilts | CKSD & SLC Preschool Staff | LCSNW Santa for Seniors | Girls on the Run | Water Filters & Solar Lights for third world families

TOGETHER our servant hearts will Love Kitsap and the world!!

God's Work. Our Hands.



THANK YOU! THANK YOU! THANK YOU!

Your generous donations at the Lenten Soup Suppers enabled SLC to help provide scholarships for 15 girls participating in the Girls on the Run program at Emerald Heights, Silver Ridge and Esquire Hills Elementary Schools. In addition, your donations will support SLC folks who will provide meals at our local shelters in the coming year.

How can you continue to support Girls on the Run?

SLC Cheer Team The Girls on the Run program concludes with a 5K Run on Saturday, May 30 at Kitsap County Fairgrounds. We want to further support the 47 girls at these 3 schools by cheering them on during their run, beginning at 9:00am. If you would like to be a part of the SLC Cheer Team, please contact Cathy Bohman, SLC's Community Connector for details.

Want to Join the 5K to Walk or Run? Any youth or adult can also participate in the run to support over 1,000 girls and their running partners. Go to gotrws.org/5k for more information or register for the run.



**LUTHERAN
WORLD RELIEF**

**Last day to bring donations is
Sunday, April 26th.**

You can also donation financially



<https://secure.subsplash.com/ui/access/WMSJVT#/>

The ONLY items needed are:

- Bath-size bars of soap
- Lightweight bath-size towel, dark color recommended (sizes between 20" x 40" & 52" x 27")

Please place items in the turquoise bin located in Fellowship Hall.

To my Silverdale Lutheran Church family:

Thank you for your cards, flowers, kind notes, and prayers. I am overwhelmed by the love and support you've shown me throughout Bob's difficult Parkinson's journey and after his passing. Bob left many footprints--of kindness, love, compassion, giving, joy, and faith. The trail he left behind continues to inspire us.

Blessings,
Nancy Brien

thank you



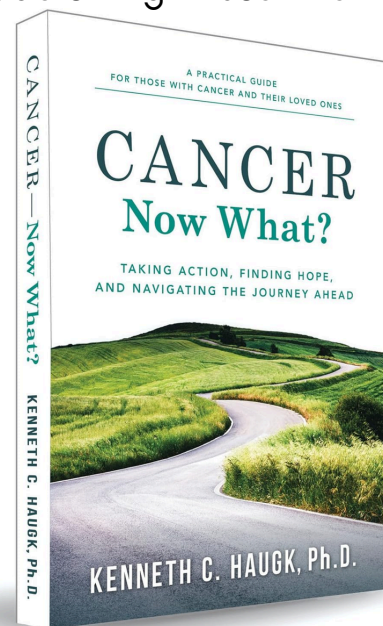
Possible New Christ Centered AA Group

Would you be interested in a "Christ Centered" AA group? There are some SLC folks who are in recovery who are looking to start an AA group with and for their fellow brothers and sisters in Christ at SLC. The purpose of the group would be to provide a safe place for Christian alcoholics to openly share their faith and concerns regarding their recovery in a confidential setting. If you are interested, please contact Jim Slade at 360.328.4069 or at jfslade@yahoo.com.

Cancer—Now What? is a comprehensive how-to guide developed by Stephen Ministries that helps cancer patients and their loved ones navigate the medical, emotional, relational, and spiritual challenges of cancer. Each copy of *Cancer—Now What?* includes a Quick Tips card, which offers suggestions for how readers might use the book.

Topics covered include: medical information, asking the right questions at the right time, how to find reliable information, tracking medical information simply and effectively, helping your medical team help you, coping with the emotional aftershocks, finding ways to express difficult feelings, not letting cancer define you, caring for yourself, getting the support you need, updating others without wearing yourself out, creating a safe place within your family, connecting with those who have faced cancer, finding spiritual support, weathering spiritual storms, being totally honest with God, and asking hard questions without feeling guilty.

If you or a family member would like a copy of this book, they are available in the church office. Staff would love to give one to you. After you are done with it, pass it along to a friend.



SLC LITTLES & FAMILIES
ages 2-6

PLAYDATE IN THE PARK

May 9th 10:30am-noon

MEET US AT THE SILVERDALE WATERFRONT PARK FOR A FUN MORNING OUTSIDE!
SNACKS | BUBBLES | SUNSHINE | MOTHER'S DAY GIFT PROJECT

RSVP



SLC Men's Retreat 2026

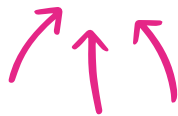
SAINT ANDREW'S HOUSE, UNION, WA
August 28-30



**REGISTRATION IS NOW OPEN FOR
THE 2026 MEN'S RETREAT!**



<https://silverdalelutheran.org/slc-mens-retreat-2026/>



Register here!

SILVERDALE LUTHERAN

VBS 2026

July 27th-30th

SAVE THE DATE

incoming pre-k to incoming 5th grade

DYNAMIC DUOS

of the Bible

*Mark your calendars and
tell your friends!
Registration opens soon!*



Vacation Bible School
VOLUNTEER APPLICATION

WE STILL HAVE CAR WASH TICKETS AVAILABLE!



Each ticket is \$12.00

<https://silverdalelutheran.org/youth-car-wash-tickets/>



middle camp 2026

JUNE 22-26

UPSIDE DOWN



DON'T MISS THE EARLY BIRD SPECIAL

\$200 until April 30th

\$250 AFTER THAT UNTIL MAY 31ST • OR UNTIL CAMP FILLS

Olympic Lutherhaven
9400 NW Wildcat Lake Road
Bremerton, WA 98312

<https://bit.ly/middlecamp>

A MINISTRY OF SILVERDALE LUTHERAN CHURCH



THE GREAT SLC CAMPOUT 2026



OLYMPIC LUTHERHAVEN
JUNE 26-28, 2026

Big Faith

“SEEN & UNSEEN”

Grab your crew and join the hunt during a weekend of fun, fellowship and faith renewal!



\$50 PER PERSON | \$200 LIMIT PER FAMILY*
CABIN, TENT, RV, OR DAY CAMP OPTIONS

*PARENTS/GUARDIANS + CHILDREN IN THE SAME HOUSEHOLD

[HTTPS://BIT.LY/THEGREATSLCCAMPOUT](https://bit.ly/thegreatslccampout)



Register today!

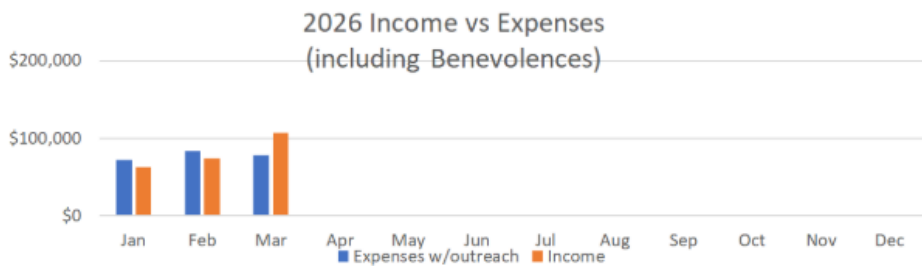
swimming • boating • delicious meals • campfires • worship • fellowship • movie night • ping pong • camp songs • fishing • and more!

We are delighted to share that our ministry income exceeded \$100K in March and exceeded our March expenses by \$29, 544. This made up the \$20K deficit we had in the first two months leaving us \$9,746



ahead after the first quarter. This is due to very generous giving, the advantage of having five Sundays in March, and our expenses being below what is typical. Being ahead after the first quarter is certainly an indication of the engagement members and friends of SLC have in our mission of "Connecting more to Christ" via Word and Sacrament and "loving Kitsap and the world" through our many service programs and events. Thank you! Let's keep it going as we head into summer! We do have a number of large payments this month for Lutherhaven and our insurance.

Net income vs expenses for March is \$29,544 (outreach paid through March)



	2024	2025	2026
Income	\$241,587	\$222,386	\$244,086
Expense	\$245,050	\$246,975	\$234,610
Difference	-\$3,463	-\$24,589	\$9,476

3-year comparison through March of each year

Financial Review Team

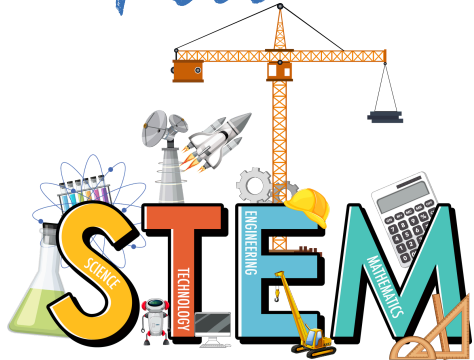
It is that time of year again when our financial review team needs to be formed and get to work on the 2025 financial review. Kyle Kincaid has been appointed to chair the team and is now looking for volunteers. This is a great way to support your church and to serve. If you would like to work with figures and finances, this is a great group for you.

Please contact Kyle at kyle@kylekincaid.com

VOLUNTEERS NEEDED

URGENT - STEM VOLUNTEERS NEEDED Apr 20 - May 17

Can you help teach 2nd and 3rd graders STEM lessons? Come one time or all 5 times - help is appreciated.



Mondays from 2pm to 3:30pm
Lessons are stand alone each week
The STEM session is 5 weeks long

Contact Marilyn Hawks if you can volunteer!

WEEK OF APRIL 19TH-25TH

Jackson Oliver

Apr 20

Zoe Sansgaard

Apr 21

Cindy Hernandez

Apr 22

Clay Shultz

Apr 22

Tom Starks

Apr 22

*Happy
Birthday!*

William Duncan

Apr 23

Liv Borson

Apr 24

Steve Hudock

Apr 24

Rowen Dieringer

Apr 25

Fred Rupp

Apr 25

Wade & Patricia Randall

April 20th (52 years)



Lisa & Tim Gregg

April 24th (34 years)

Joyce Lengel & William Sanders

April 25th (11 years)



SLE,

I want to thank you once again for your prayers, visits, and the incredible support you've shown my family. My dad has mostly recovered and is now back in his home. While he has slowed down after his heart and foot procedures (and five weeks of very limited movement) he is doing well. We are grateful he is home and look forward to celebrating his 87th birthday next month.

I also want to share that miracles truly do happen in our everyday lives. My brother, Eric, is now cancer-free...something doctors cannot fully explain, but we know is by the grace of God. While he may never return home due to the effects of surgery, multiple strokes, and radiation, his cancer is gone, and his brain is healing. We don't know what the future holds, but we are filled with hope. Thank you for all your prayers, encouragement, and hugs over the past eight months. I never realized how much I would need my church family, and I cannot imagine walking through the past 15 months without you.

Peace and blessings to you all,
Karim Brandes

Funds given in memory of Francis Husby and Bud Price were recently used to purchase 5 matching chairs for the Narthex. Thank you to Darcy Lund for finding a great deal on the chairs.

SLC Calendar | Week of April 19th

Sunday, April 19th

- 8:30a Early Worship (S)
- 9:45a PB's Adult Education (FH)
- 9:45a Sunday School (GP)
- 11:00a Late Worship (S)
- 12:30p Ireland Pre-Trip Meeting #1 (4)
- 2:00p Hometown Band Board Meeting (4)
- 6:00p GSWW Troop Meeting (4)
- 7:00p High School Youth Night (GP)

Monday, April 20th

- 9:00a Ties That Bind (Quilters) (FH)
- 9:30a Arrangers Guild (23)
- 5:30p GSWW Leaders Meeting (4)
- 6:30p Boy Scouts (GP)

Tuesday, April 21st

- 9:45a SLP Chapel (S)
- 10:00a Weekly Staff Meeting (4)
- 12:00p Al Anon (27)
- 1:00p Text Study (4)
- 5:00p Youth Jazz Rehearsal - Brem. Symphony (S)
- 7:00p Compassionate Friend (22)
- 7:00p Hometown Band (FH)

Wednesday, April 22nd

- 10:00a SLP Chapel (S)
- 10:30a Manna Bible Study (4)
- 12:00p Hearty Meals (FH)
- 4:00p Bible Study (St)
- 5:00p EWB (S)
- 6:00p Foundations Class (4)
- 6:00p GS Leaders (St)
- 6:30p Middle Youth Night (GP)
- 7:00p Sanctuary Choir (S)

Thursday, April 23rd

- 8:30a Bible Study Fellowship (S, 21-23)
- 10:30a Thursday Bible Study (FH)
- 12:00p Song of the Church (S)
- 1:00p Faith and Fellowship for Older Men (St)
- 1:00p Our'Chestra (S)
- 6:00p Kitsap County Search Dogs (FH)
- 6:30p Cub Scout Den Meeting (GP)
- 6:30p Girl Scouts (4)
- 6:45p Alleluia Ringers (S)
- 7:00p Venture Scouting (23)

Friday, April 24th

- 8:00a Men's Prayer Breakfast (Bowling Alley)
- 6:00p GSWW Sewing Event (4)

Saturday, April 25th

- 11:00a Beta Sign Phi Founders Day (GP)
- 1:00p Memorial for Gerry "Bear" Randall (S)

Sunday, April 26th

- 8:30a Early Worship (S)
- 9:45a PB's Adult Education (FH)
- 9:45a Sunday School (GP)
- 11:00a Late Worship (S)
- 5:30p Confirmation Meeting (HS)
- 7:00p High School Youth Night (GP)

Summer worship Hours begin

8:30AM May 24th 10:30AM

Summer Brunches begin on Sunday June 14th.

Worship Attendance April 12th

Early Service	Late Service	In Person Total	Online Total	Grand Total
162	151	313	492	805