

Love in Action

eliminating racism
empowering women
ywca
Kitsap County



YWCA ALIVE shares this statistic...did you know that 1 in 4 women and 1 in 7 men will experience domestic violence in their lifetime?

24 hour crisis line 1-800-500-5513

YWCA ALIVE Shelter Alternatives to Living In a Violent Environment

Since 1948, the YWCA has provided programs and services in Kitsap County. YWCA Kitsap County is part of a YWCA movement that serves over 2 million people in the US and 25 million worldwide. The YWCA is on a mission to eliminate racism, empower women, stand up for social justice, help families and strengthen communities.

In response to the needs of domestic violence victims and their children, the YWCA of Kitsap County opened the doors of the YWCA ALIVE Shelter Program in 1978. Currently the YWCA serves over 6,000 people annually, providing a supportive network of services for survivors of domestic violence and their children and at-risk families. YWCA Kitsap County is the only Washington State designated provider of domestic violence services in Kitsap County.

A special thank you to all who volunteer their time and share of their resources to support the YWCA who offers "hope and new beginnings" through their compassionate services!



Are you interested in advocacy or learning more as an allied professional?? Consider registering for the YWCA's 30 hour Domestic Violence Victim Services Training to be held November 2019 and March/July 2020

As the YWCA builds partnerships and increases community awareness to create positive social change, volunteers are always welcome. Volunteers help out with office needs, events, advocacy and community involvement.

What services does the YWCA provide??

- 24 hour Domestic Violence Hotline
- 17 bed Domestic Violence Emergency Shelter
- Supportive Housing Program (HOME SAFE) in Silverdale and Poulsbo
- Legal and Family Advocacy
- Housing & Vocational Counseling
- Women's Support Groups
- Other support services

The Main Office of the YWCA of Kitsap County is located at 905 Pacific Ave. Bremerton

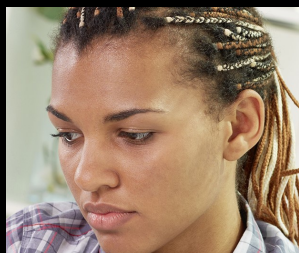
During 2018, Silverdale Lutheran Church gave \$200 to support the YWCA ALIVE shelter program.



The YWCA will gratefully accept the following donations:

- Infant & children's disposable diapers
- Full-size toiletries
- New undergarments (women)
- New socks (women & children)
- Feminine hygiene products
- Plastic hairbrushes
- Coats (women & children)
- DVD player
- Small television
- Lamps
- Gas Cards

Monetary donations to the YWCA



OCTOBER IS
domestic violence awareness month

God's work. Our hands.

